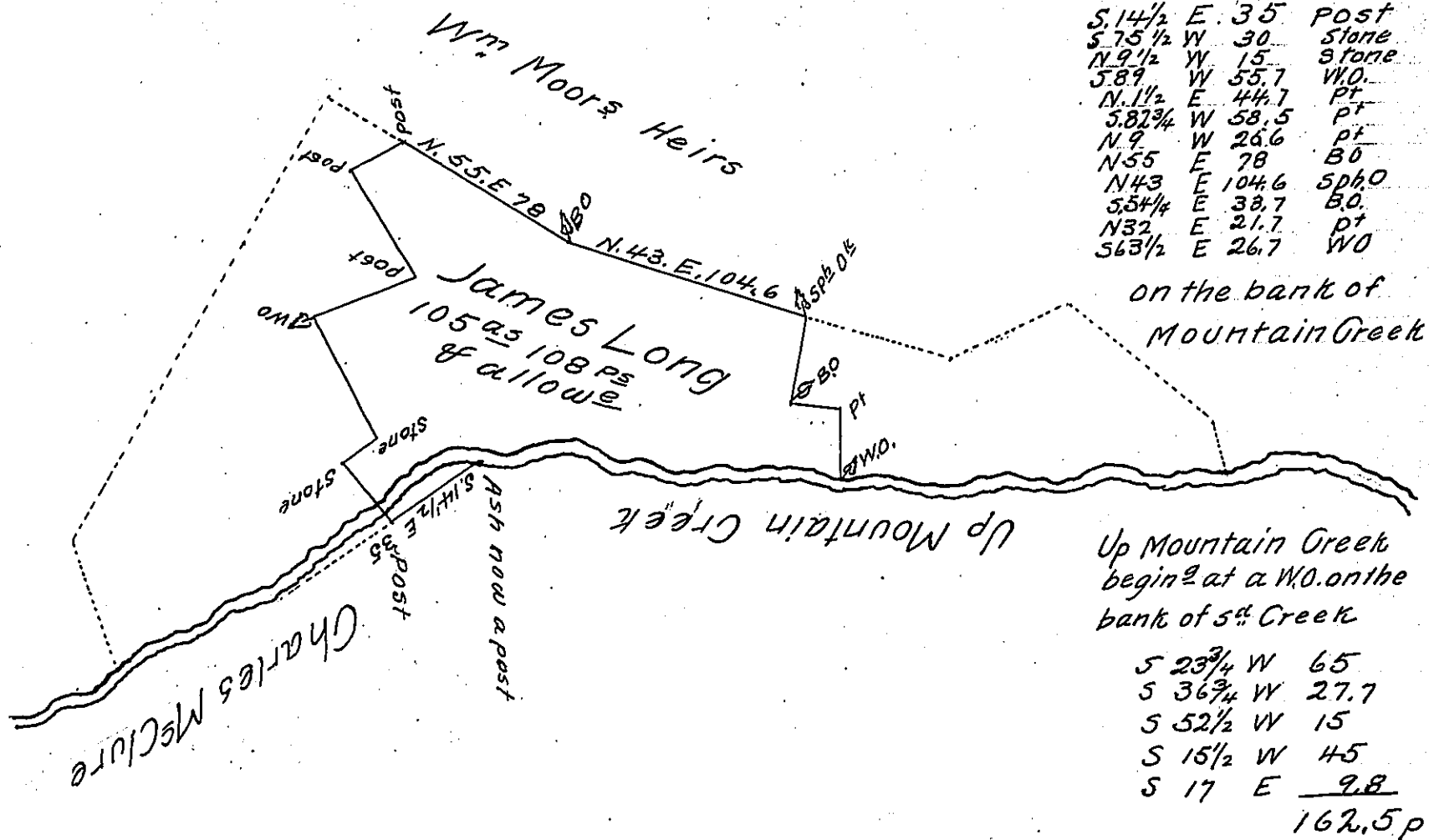


Course & Distances round the tract begin^d at a post 43
formerly an Ash on Mountain Creek thence



Draught of a tract of Land situate in South Middleton township
Cumb^d County Cont^d 105^{ac} 108^{ps} & allowe^s of six per. ct for roads &c.
It being part of 252^{ac} 60^{ps} & allowe^s Survey^d in pursuance of a
Warrant grant^d to James Long dat^d May 24th Anno Domini 1753
Surv^d July 29th 1822

S A M = RUBY D.S.

To Samuel Cochran Esquire
Surveyor General

IN TESTIMONY that the above is a copy of the original remaining on file in
the Department of Internal Affairs of Pennsylvania, made
conformably to an Act of Assembly approved the 16th day of
February, 1833, I have hereunto set my Hand and caused
the Seal of said Department to be affixed at Harrisburg,
this eighteenth day of October 1905

Loach J. Brown
Secretary of Internal Affairs.